

Roadsoft® Roundup

March 2019, Vol. 19, Issue 1



For Roadsoft help, visit
the Roadsoft Manual at

<http://roadsoft.org/help>

Roadsoft 2019.3 Primer

The Center for Technology & Training (CTT) would like to announce the release of Roadsoft 2019.3. In addition to numerous feature enhancements and minor bug fixes, this new release will include an updated Traffic Signal Module.

2019 Framework/Data Migration Update

Roadsoft spring software releases historically include an update to the Michigan geographic framework (MGF) base map. These spring releases are made available to Roadsoft customers prior to the start of the TAMC PASER collection season (first Monday in April). The reasoning for this timing has been to ensure that local agencies and regional/metropolitan planning organizations (RPO/MPO) were all on the same version of the MGF for data collection to avoid any potential data conflicts or import errors. However, in 2018 there wasn't an update to the MGF due to the Michigan Department of Technology, Management and Budget (DTMB) and the Michigan Department of Transportation (MDOT) technology upgrade of the MGF and Linear Referencing System (LRS). This was explained in detail last year in [Roadsoft Roundup Volume 18, Number 1](#).

While all parties involved were hoping to be able to include the updated MGF version 19 (MGF V19) with the Roadsoft 2019.3 release, the upgrade process has caused a delay in the delivery of MGF V19 to the CTT.

The CTT is actively working with the DTMB and will provide an update to Roadsoft that will include the MGF V19 during the summer of 2019. **The 2019 PASER data collection will start with ALL agencies using the current MGF V17.**

This timing is different than in past years when the data migration occurred prior the start of the data collection season and could affect the data collection cycle of some agencies and/or RPO/MPOs. With this in mind, the CTT has developed guidelines for local agencies and RPO/MPOs to follow for the 2019 data collection cycle.

Guidelines For Dealing with Data Collection and Base Map Update In Roadsoft

Roadsoft and LDC Versions Need to Match

Roadsoft and the Laptop Data Collector (LDC) should be on the same release version to ensure compatibility. If Roadsoft is updated to a version with MGF V19 while there is still LDC data in an older version using MGF V17, the LDC data files cannot be imported back into Roadsoft by the user.

Always Complete the Roadsoft Data Collection Cycle

Whether you are updating Roadsoft or LDC, migrating, or submitting data, always make sure to import data from the LDC back into Roadsoft first. This ensures that all your data is in the same version and is compatible. It's also recommended that you create a Roadsoft backup after importing the LDC data.

Do Not Update Roadsoft or the LDC During Active Data Collection

The version of Roadsoft that will include MGF V19 will be released during the summer of 2019, and while this shouldn't cause an issue for agencies that collect data during the spring or fall, it could be an issue for agencies collecting data in the summer. Once data collection starts, it's recommended that the agency finish collecting data on the same version they started with to avoid potential issues with different MGF versions.

Can Collect Data in MGF V17 or MGF V19

Local agencies can collect PASER or any other data (sign, culvert, etc) using Roadsoft releases that use either version of the MGF. *However, local agencies and their RPO/MPO will need to coordinate, as once the RPO/MPO upgrades to MGF V19, the remaining agencies yet to collect PASER data will need to upgrade to MGF V19.*

Regions Can Receive Data in Either MGF V17 or MGF V19

RPO/MPOs can collect and receive data in either MGF V17 or

The Center for Technology & Training at Michigan Technological University publishes Roadsoft Roundup four times a year. To obtain permission to reprint any articles or graphics from Roadsoft Roundup, or to subscribe, please contact the CTT.

Director: Tim Colling, PhD, PE

Project Leader: Gary Schlaff

Senior Software Architect: Nick Koszykowski

Principal Programmer: Luke Peterson

Software Engineers: Mary Crane, Nancy Moore, Mike Pionke, Sean Thorpe, Blaine Thorpe

Civil Engineers: Chris Gilbertson, PhD, PE, Andy Manty, PE, Pete Torola, PE

Editor: Scott Bershing **Contributor:** Sidona DeBrule

Center for Technology & Training

Michigan Technological University

309 Dillman Hall

1400 Townsend Dr.

Houghton, MI 49931-1295

Telephone..... (906) 487-2102

Fax (906) 487-3409

E-mail roadsoft@mtu.edu

Web..... www.roadsoft.org

Roadsoft® Roundup

V19. However, once the region migrates and begins working in MGF V19, all subsequent data collection must be done in MGF V19. If a local agency upgrades to MGF V19 prior to collecting PASER data and prior to the region upgrading to MGF V19, the agency may have to postpone their PASER collection until later in the season to accommodate the RPO/MPO and other agencies in their region.

Regions Should Submit Data to TAMC in MGF V19

DTMB/CSS would prefer that all data submitted to TAMC is using MGF V19. Regions should wait until all of the local agency PASER data is collected before submitting the data to TAMC. Prior to submission, all data collected using MGF V17 can be migrated to MGF V19.

Download and Install Roadsoft 2019.3 & Roadsoft LDC 2019.3

Agencies should be running matching versions of Roadsoft and Roadsoft LDC. Before updating any software, it's recommended that users first complete the data collection cycle by exporting data from all LDC instances and importing it into Roadsoft. Once all the data from all LDC instances are imported, the agency should then perform a backup of their Roadsoft data. At this point it's then recommended to perform the software update and install Roadsoft and Roadsoft LDC 2019.3.

Roadsoft 2019.3 can be downloaded at <http://roadsoft.org/downloads>

Roadsoft LDC 2019.3 can be downloaded at <http://roadsoft.org/downloads/laptop-data-collector>

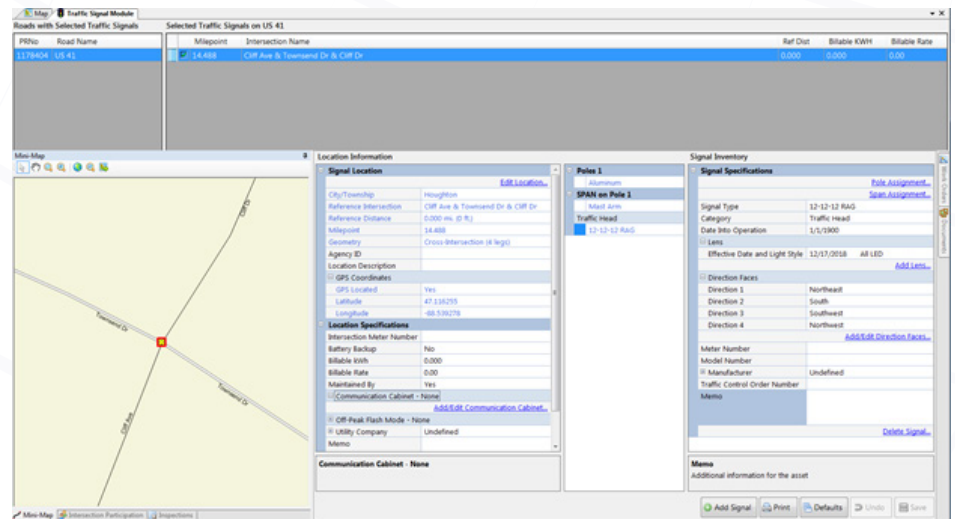
Updated Traffic Signal Module

Roadsoft 2019.3 will debut an updated Traffic Signal Module. The updated Traffic Signal Module has a number of new features. The module is now a dockable window, which matches the other

Roadsoft modules, and provides a cleaner and more organized layout. In Roadsoft, windows are movable around the workspace to customize the interface. Windows can be docked in the main Roadsoft window relative to other windows, or undocked as standalone windows that can move around the desktop.

The updated module also has additional tabs and fields for relevant information. These assist Roadsoft customers in managing the assorted documents and forms they have related to their traffic signal assets. The Work Order tab contains fields related to what work needs doing and who is involved. The Inspections tab is useful for recording what tests and inspections have been performed on the traffic signal and the general results of said tests. The Documents tab is a centralized place for storing any forms, files, and documents relevant to traffic signals. There are also multiple new fields in the Traffic Signal Module, mainly related to traffic signal location and specifications.

Another major improvement to the module is a revamped asset



The updated Traffic Signal Module

management system for the many devices utilized in and around traffic signals. The Asset Hierarchy is an improved and expanded system for organizing the poles, span, traffic heads, and other assorted devices found around traffic signals. It organizes devices by the pole or span they are mounted on, and includes new fields and lookups.

Roadsoft® Roundup

Another new feature is the communication cabinet network. Communication cabinets are a major part of traffic signal management because they coordinate and control multiple traffic signals located at assorted intersections, and this new feature in Roadsoft allows users to record where communication cabinets are located and what traffic signals they control, creating an efficient and easy way to organize traffic signal networks.

With the latest rewrite and update, all Roadsoft modules are now converted to our latest programming language (.Net). Updating Roadsoft's programming language is necessary to ensure software compatibility, functionality, and longevity. It also provides an opportunity to update modules to add new features; improve functionality; and standardize the look, feel, and function between all of the modules.

Windows 7 End of Service Life Reminder

As previously announced, Microsoft is ending their support for Windows 7 and will no longer provide security updates after January 14, 2020. In response to this announcement, the CTT will also no longer support or allow new software installations on PCs running Windows 7 starting January, 2020.

More information is available on the Roadsoft website at <http://roadsoft.org/windows-7-end-service-life>.

Agencies that need assistance should contact Roadsoft technical support at roadsoft@mtu.edu.

Reminder - Roadsoft Support for SQL Server 2008 & 2008R2 Ended

As previously announced, Microsoft is ending their extended support for SQL Server 2008, SQL Server 2008R2, and SQL Express 2008 in July, 2019. In response, the CTT ended Roadsoft and MERL support for all SQL 2008 products as of January 1, 2019. The 2019.3 release of Roadsoft will prompt customers to update if they connect to SQL Server 2008 products, and future Roadsoft releases will not allow connections to any of the SQL Server 2008 products. More information is available on the Roadsoft website at <https://roadsoft.org/roadsoft-support-sql-server-2008-and-2008r2-ending>.

Update SQL Server

The CTT has information and software available to assist agencies with updating their SQL server software. These software updates are required for both Roadsoft and MERL users.

[Click Here](#) for instructions on updating the SQL server software to a newer version.

The CTT has three SQL Express installers available for download. The SQL Express 2014 32-bit installer should be used by agencies that are running a 32-bit version of Windows. There is also an SQL Express 2014 64-bit installer available if customers experience trouble with installing the 2017 version of the software. The SQL Express 2017 installer should be used by agencies running a 64-bit version of Windows 8.1 or newer. All versions of the installer can be found at: <http://roadsoft.org/downloads/sql-downloads>.

Agencies that need assistance with upgrading and moving their database should contact technical support at roadsoft@mtu.edu.

Upcoming Training

What's New in Roadsoft Version 2019.3 & Roadsoft User Group (RUG) Meeting
April 3, 2019

<http://ctt.nonprofitsoapbox.com/roadsoft/event/841>

Special Topics in Roadsoft: New Traffic Signal Module

April 10, 2019

<http://ctt.nonprofitsoapbox.com/roadsoft/event/845>

2019 Roadsoft on the Road

April 15-19, 2019

<http://ctt.nonprofitsoapbox.com/roadsoft/event/842>

Roadsoft on the Road is a customized, on-site session. Availability is limited based on responding agencies.

Questions? Email ctt@mtu.edu

Visit <http://ctt.nonprofitsoapbox.com/upcoming-events> to see all upcoming CTT training events.