

# RoadSoft® RoundUp

Do you have a question?  
Call Technical Support at 906-487-2102

August 2007, Vol. 7, No. 3

"RoadSoft allows us to keep all of our street data in one place. The data is safe, easy to find, and it's accessible for our department and the police and building departments as well."  
— Amy Schoonover, DPW Director, City of Charlotte

## New Features in RoadSoft: Driveway Module & New Linear Pavement Marking Interface

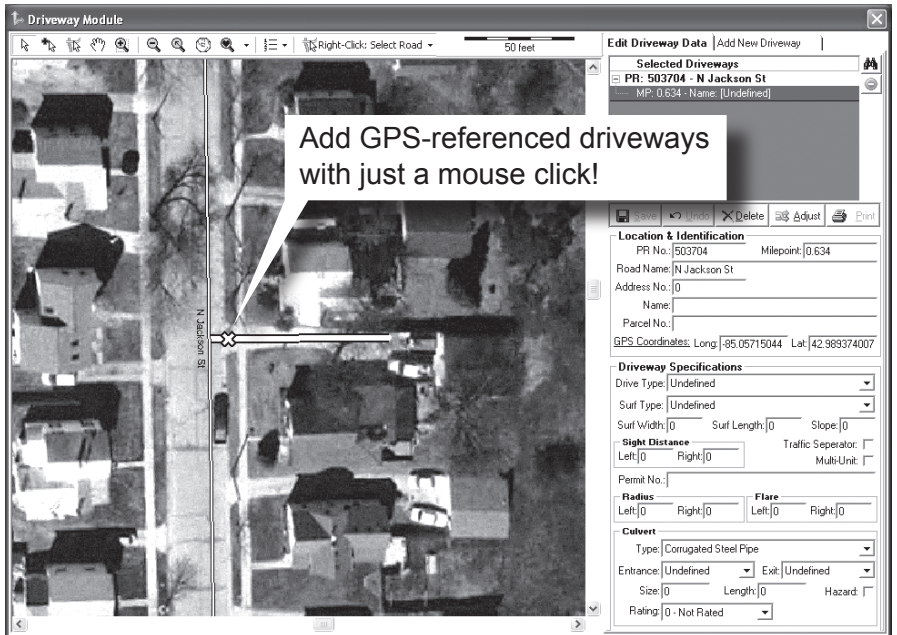
The latest updates to *RoadSoft-GIS 6.6* include the new Driveway Module, a new Linear Pavement Marking Module interface and additional usability changes that make *RoadSoft-GIS* even more flexible and powerful. As with most *RoadSoft-GIS* features, these changes were made based on user requests. Don't pass up the chance to get your ideas into *RoadSoft-GIS* during the regular *RoadSoft* User Group (RUG) meetings. The next RUG meeting is on-line on August 22, so you don't even have to leave your desk to attend.

### Driveway Module

The biggest change to *RoadSoft-GIS* for this release is the addition of the all new Driveway Module. In this module, you can add driveways by clicking on the GIS map or reference a driveway from an intersection. The driveway module also allows you to enter data about the driveway, such as driveway culvert type, dimensions, surface type, address, permit number, and more.

### Linear Pavement Marking Changes

The Linear Pavement Marking module is completely rewritten, and now allows you to add markings across multiple road segments. Many other changes help you enter data more efficiently.



### Crash Editing

*RoadSoft-GIS* users can now edit crash locations and certain details of a crash to improve the accuracy and quality of crash data.

### Bridge Module Changes

The Bridge Module shows data from the national PONTIS database for your jurisdiction. You can build reports, filters, and legends to help identify bridges and track inspection histories, surface types, and other PONTIS data.

These are just some of the changes in *RoadSoft-GIS* version 6.6. Go to <http://www.roadsoft.org> to download the update and try out the other changes in *RoadSoft-GIS*. You can also download a patch for the *Laptop Data Collector* at our web site. You will need *RoadSoft-GIS* version 6.0 or higher to apply either the *RoadSoft* or the *Laptop Data Collector* updates. To get *RoadSoft-GIS*, contact Michigan LTAP at 906-487-2102.

**New Features in the RoadSoft-GIS 6.6 Download**

- New Driveway Module
- Rewritten Linear Pavement Marking Module
- New interface features
- Filters/Networks for layers using a saved Road Network
- Ability to edit Crash location and certain crash details
- Bridge reports, filters and legends

Download available at <http://www.roadsoft.org>

Michigan's Technology Development Group at Michigan Technological University publishes *RoadSoft RoundUp* four times a year. To obtain permission to reprint any articles or graphics from *RoadSoft RoundUp*, please contact the editor at the address shown below. Subscriptions are available by contacting TDG. © Copyright 2007 Michigan Technological University.

Director—Terry McNinch; Civil Engineers—Tim Colling, P.E. and John Kiefer, P.E.; Project Leader—Gary Schlaff; Sr. Software Engineers—Steve Kangas, Nick Koszykowski; Software Engineers—Mary Crane, Nancy Moore, Luke Peterson, Mike Pionke, Scott Pollins; Programmer Analysts—Chris Pinnow, Jason Poll; Editor—John Velat	<b>Technology Development Group</b> Michigan Technological University 309 Dillman Hall 1400 Townsend Dr. Houghton, MI 49931-1295	Telephone ..... 906-487-2102 Fax ..... 906-487-3409 E-mail ..... <a href="mailto:RoadSoft@mtu.edu">RoadSoft@mtu.edu</a> Web ..... <a href="http://www.RoadSoft.org">www.RoadSoft.org</a>
---	--	---

**RoadSoft RoundUp Volume 7, Number 3**  
3274 copies mailed this edition

Michigan Technological University is an equal opportunity educational institution/equal opportunity employer.



## Help Develop *RoadSoft* Without Leaving Your Desk! *RoadSoft-GIS* On-Line User Group Meeting

Learn more about using *RoadSoft-GIS*, influence development direction, and share your questions, comments, and ideas with the developers and other users.

Date: Wednesday, August 22

Time: 10:00 AM - Noon

Please call 906-487-2102 by August 21 to register and receive dial-in instructions. All you need is a computer, Internet connection, and a telephone to participate.

***All RoadSoft-GIS users from all regions are welcome.***

U.S. Department of Transportation  
Federal Highway Administration



Sponsored by



Published in cooperation with  
Michigan Department of Transportation

Technology Development Group  
Michigan Technological University  
309 Dillman Hall  
1400 Townsend Drive  
Houghton, MI 49931-1295  
906-487-2102

